

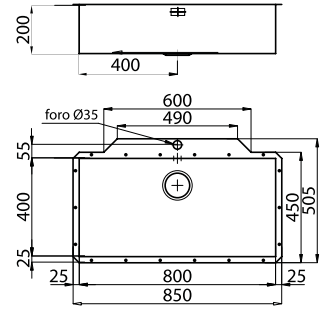


QUARDA 90R

AF0011.12188500 Undermount

RRP	3,100	RRP	3,250
WM RM		EM RM	

- Finish: Stainless steel AISI 304 brushed
- 1.0mm thickness
- 3 ½ inch waste fitting
- Dimension: 850mm x 505mm x 200mm depth
Cut out: 800mm x 400mm

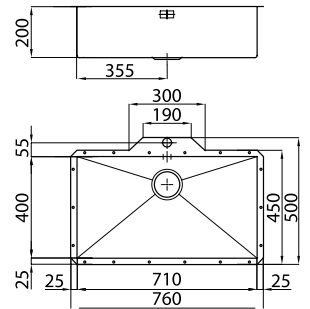


QUARDA 80R

AF0111.12178500 Undermount

RRP	2,800	RRP	2,940
WM RM		EM RM	

- Finish: Stainless steel AISI 304 brushed
- 1.0mm thickness
- 3 ½ inch waste fitting
- Dimension: 760mm x 500mm x 200mm depth
Cut out: 710mm x 400mm

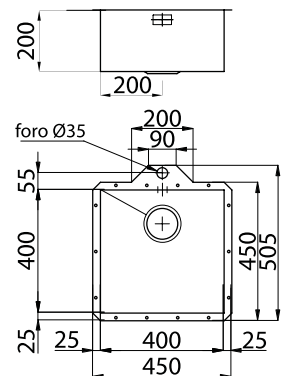


QUARDA 45R

AF0211.12148500 Undermount

RRP	2,200	RRP	2,310
WM RM		EM RM	

- Finish: Stainless steel AISI 304 brushed
- 1.0mm thickness
- 3 ½ inch waste fitting
- Dimension: 450mm x 505mm x 200mm depth
Cut out: 400mm x 400mm



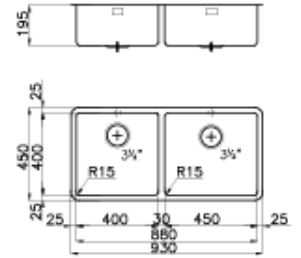


KE 100 2B R15

AF1011.22078500 Undermount

RRP	3,700	RRP	3,880
WM RM		EM RM	

- Finish: Stainless steel AISI 304 brushed
- 1.0mm thickness
- 3 ½ inch waste fitting
- Dimension: 930mm x 450mm x 195mm depth
Cut out: 400mm x 400mm / 450mm x 400mm

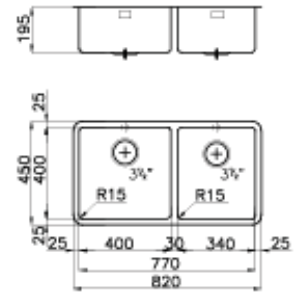


KE 90 2B R15

AF1111.22068500 Undermount

RRP	3,300	RRP	3,460
WM RM		EM RM	

- Finish: Stainless steel AISI 304 brushed
- 1.0mm thickness
- 3 ½ inch waste fitting
- Dimension: 820mm x 450mm x 195mm depth
Cut out: 400mm x 400mm / 340mm x 400mm

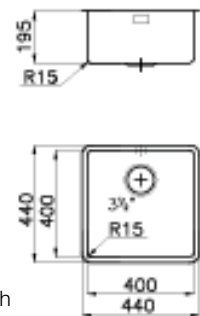


KE 45 R15

AF1211.21568500 Undermount

RRP	1,700	RRP	1,780
WM RM		EM RM	

- Finish: Stainless steel AISI 304 brushed
- 1.0mm thickness
- 3 ½ inch waste fitting
- Dimension: 440mm x 440mm x 195mm depth
Cut out: 400mm x 400mm





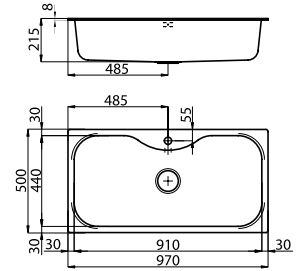
Stainless steel dish holder

URAGANO 100

AF2011.15556000 Topmount

RRP	2,800	RRP	2,940
WM RM		EM RM	

- Finish: Stainless steel AISI 304 brushed
- Stainless steel dish holder
- 1.0mm thickness
- 3 ½ inch waste fitting
- Dimension: 970mm x 500mm x 215mm depth
Cut out: 950mm x 480mm



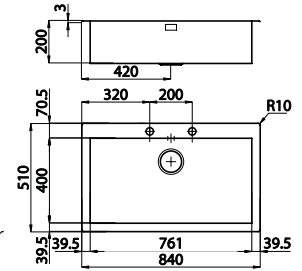
Round Dispenser
Built-in chromed soap/dish detergent dispenser

QUARDA 90

AF3011.12190501 Topmount

RRP	4,500	RRP	4,720
WM RM		EM RM	

- Finish: Stainless steel AISI 304 brushed
- Built-in chromed soap/dish detergent dispenser
- 1.0mm thickness
- 3 ½ inch waste fitting
- Dimension: 840mm x 510mm x 200mm depth
Cut out: 820mm x 495mm



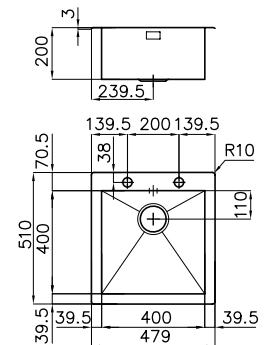
Round Dispenser
Built-in chromed soap/dish detergent dispenser

QUARDA 45

AF3011.12050501 Topmount

RRP	3,300	RRP	3,460
WM RM		EM RM	

- Finish: Stainless steel AISI 304 brushed
- Built-in chromed soap/dish detergent dispenser
- 1.0mm thickness
- 3 ½ inch waste fitting
- Dimension: 479mm x 510mm x 200mm depth
Cut out: 459mm x 495mm



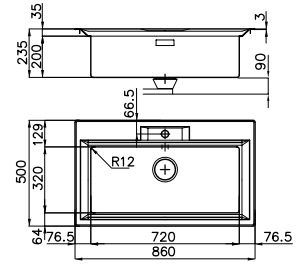


FL BASE 80BB

AF4011.29750600 Topmount

RRP	2,700	RRP	2,830
WM RM		EM RM	

- Finish: Stainless steel AISI 304 brushed
- 0.8mm thickness
- 3 1/2 inch waste fitting
- Dimension: 860mm x 500mm x 200mm depth
Cut out: 840mm x 480mm

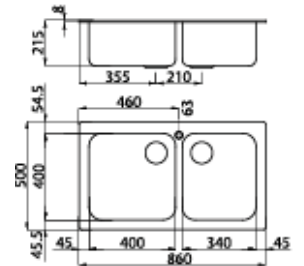


S3000 90 2B

AF5011.13820620 Topmount

RRP	2,700	RRP	2,830
WM RM		EM RM	

- Finish: Stainless steel AISI 304 brushed
- 0.8mm thickness
- 3 1/2 inch waste fitting
- Dimension: 860mm x 500mm x 215mm depth
Bowl dimension: 400mm x 400mm / 340mm x 400mm
Cut out: 840mm x 480mm

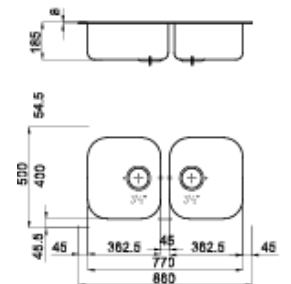


F300 90 2B

AF6011.13520600 Topmount

RRP	1,500	RRP	1,570
WM RM		EM RM	

- Finish: Stainless steel AISI 304 brushed
- 0.8mm thickness
- 3 1/2 inch waste fitting
- Dimension: 860mm x 500mm x 185mm depth
Bowl dimension: 362.5mm x 400mm / 362.5mm x 400mm
Cut out: 840mm x 480mm



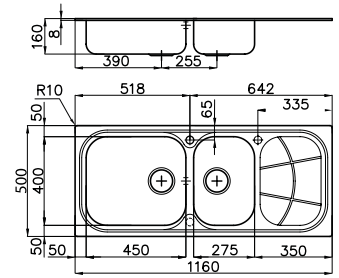


BIG BOWL 1 1/2B1D

AF7111.15122000 Topmount

RRP	1,100	RRP	1,155
WM RM		EM RM	

- Finish: Stainless steel
AISI 304 brushed
- 0.8mm thickness
- 3 1/2 inch waste fitting
- Dimension: 1160mm x 500mm x 160mm depth
Bowl dimension: 450mm x 400mm / 275mm x 400mm
Cut out: 1140mm x 480mm

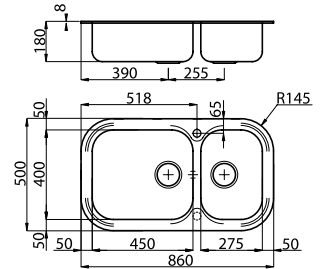


BIG BOWL 2B

AF7211.16620000 Topmount

RRP	1,150	RRP	1,210
WM RM		EM RM	

- Finish: Stainless steel
AISI 304 brushed
- 0.8mm thickness
- 3 1/2 inch waste fitting
- Dimension: 860mm x 500mm x 160mm depth
Bowl dimension: 450mm x 400mm / 275mm x 400mm
Cut out: 840mm x 480mm

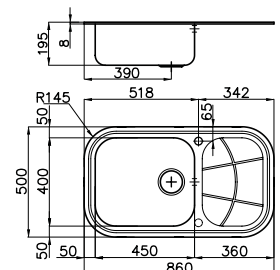


BIG BOWL 1B 1D

AF7311.16612000 Topmount

RRP	800	RRP	840
WM RM		EM RM	

- Finish: Stainless steel
AISI 304 brushed
- 0.8mm thickness
- 3 1/2 inch waste fitting
- Dimension: 860mm x 500mm x 195 depth
Bowl dimension: 450mm x 400mm
Cut out: 840mm x 480mm



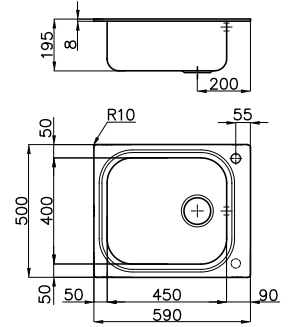


1BB

AF7011.15110000 Topmount

RRP	800	RRP	840
WM RM		EM RM	

- Finish: Stainless steel AISI 304 brushed
- 0.8mm thickness
- 3 ½ inch waste fitting
- Dimension: 590mm x 500mm x 195mm depth
Bowl dimension: 450mm x 400mm
Cut out: 570mm x 480mm

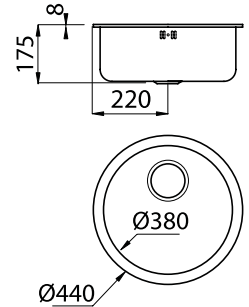


RB 440MM

AF7411.10100600 Topmount

RRP	700	RRP	735
WM RM		EM RM	

- Finish: Stainless steel AISI 304 brushed
- 0.8mm thickness
- 3 ½ inch waste fitting
- Dimension: Ø 440mm x 175mm depth
Bowl dimension: Ø 380mm
Cut out: Ø 420mm



Foster waste disposer is equipped with a high-efficiency induction motor, it's power remains constant even in the presence of hard or tough residue.

The waste disposers can be installed in all our sinks with 3.5" waste fitting. Remember to check the dimensions of the sink-waste shredder assembly.

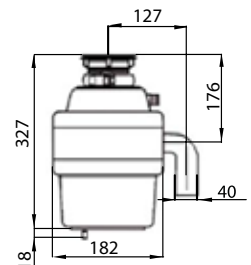
The waste disposer unit includes a practical pneumatic control. It can be installed on the worktop or on the sink.

FWD 50

AF8011.84391120 Waste disposer

RRP	1,650	RRP	1,730
WM RM		EM RM	

- 0.50 HP - 380W
- 220-240V/50Hz
- Anti-corrosion
- Black
- Pneumatic Control for On/Off can be installed on the worktop or on the sink
- High efficiency induction motor

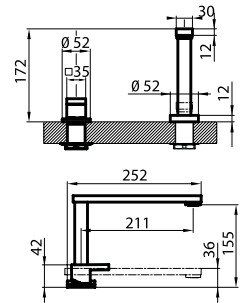




FLAT

AG0711.84780000 Mixer			
RRP	3,100	RRP	3,250
WM RM		EM RM	

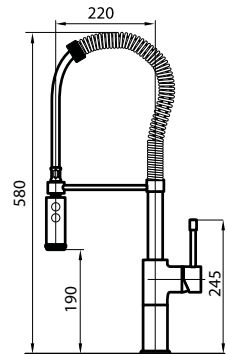
- 360° mixer rotating barrel
- Collapsible barrel (up & down)
- Strengthening plate
- Anti-scale aerator
- Ceramic disc cartridge
- Double hole needed, distance between holes max 500mm - min 85mm



MAGNUM

AG0211.84840000 Mixer			
RRP	2,800	RRP	2,940
WM RM		EM RM	

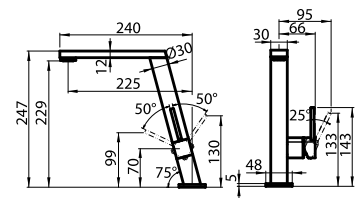
- 360° mixer rotating barrel
- Double water flow movable shower
- Strengthening plate
- Anti-scale aerator
- Ceramic disc cartridge
- High resistant flexible spring



MASTER

AG0611.84930000 Mixer			
RRP	2,300	RRP	2,410
WM RM		EM RM	

- 360° mixer rotating barrel
- Strengthening plate
- Anti-scale aerator
- Ceramic disc cartridge

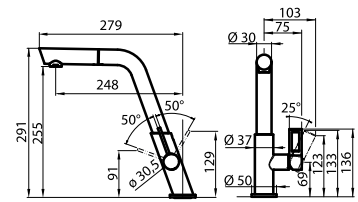




KE

AG0111.84920000 Mixer			
RRP	2,300	RRP	2,410
WM RM		EM RM	

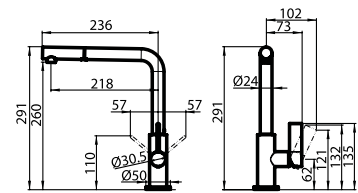
- 360° mixer rotating barrel
- Strengthening plate
- Anti-scale aerator
- Ceramic disc cartridge
- Extractable shower head



OMEGA PLUS

AG0311.84970200 Mixer			
RRP	1,900	RRP	1,990
WM RM		EM RM	

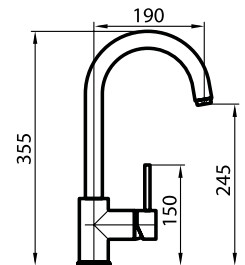
- 360° mixer rotating barrel
- Extractable shower head
- Strengthening plate
- Anti-scale aerator
- Ceramic disc cartridge



F2000 - ALTO

AG0411.84580000 Mixer			
RRP	990	RRP	1,040
WM RM		EM RM	

- 360° mixer rotating barrel
- Strengthening plate
- Anti-scale aerator
- Ceramic disc cartridge



S1000 - Z85

AG0511.84425000 Mixer			
RRP	660	RRP	695
WM RM		EM RM	

- 360° mixer rotating barrel
- Strengthening plate
- Anti-scale aerator
- Ceramic disc cartridge

