



Understated elegance from the kitchen to the living room

This discreet pull-out shelf blends in perfectly in kitchens, living rooms and dressing rooms. It combines direct access through the front of the shelf with an excellent overview of shelf contents, making it truly unique.

- Order Kit No**
 31-EXTENDO 600 (CMP)
 31-EXTENDO 900 (CMP)
 31-EXTENDO 400 (WH)
 31-EXTENDO 450 (WH)
 31-EXTENDO 500 (WH)
 31-EXTENDO 600 (WH)
 31-EXTENDO 900 (WH)

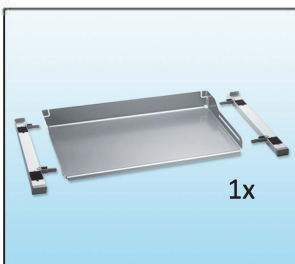


B = Unit Width	400 / 450 / 500 / 600 / 900 mm
T = Interior Depth	500 mm
H = Interior Height	90 mm

Extendo

- * The shelves closed base and rim prevent objects from falling out or jamming.
- * The material's rigidity makes it especially suitable for use in widths of 600 to 1,200mm.
- * The curved corner make them easy to clean.
- * Also be used in units with sliding doors.

Accessories for Extendo

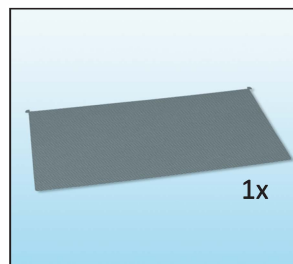


1x

Extendo

- Shelf for concealed extension runner
- * Including adapter & Dynapro runner
- * Surface: White

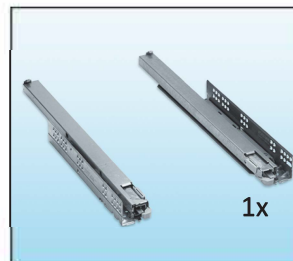
Width	Depth	Height
362-368	495	90
412-418	495	90
462-468	495	90
562-568	495	90
862-868	495	90



1x

Non-slip Mat

- * Easy to remove for cleaning.



1x

Grass Dynapro 450mm

- * Full-extension runner
- * loading: 40kg

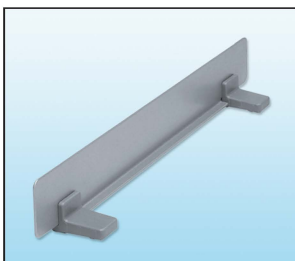
Optional Items



Extra Shelf Set (White)

- * Use the magnetic strip to attach to the Extendo.

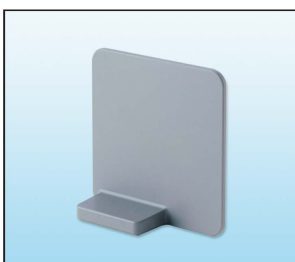
Width	Depth	Height
834	226	160 / 164
534	226	160 / 164



Rail (white)

- * Magnetic clip-on shelf rail Extendo pull-out shelf.

Size (mm)	400	450	500	600	900



Shelf Divider (White)

- * Can be attached to the shelf (base or side) Or the non-slip mat.